

Jeep®



2018

WRANGLER JK

PENTASTAR® 3.6L V6 ENGINE WITH VARIABLE VALVE TIMING (VVT) /
5-SPEED AUTOMATIC TRANSMISSION WITH AUTOSTICK* /
ROCK-TRAC® 4x4 SYSTEM* / TRU-LOK® LOCKING DIFFERENTIALS* /
4x4 OF THE DECADE^{1†} / TRAIL RATED® CAPABILITY /
DANA® 44 HEAVY-DUTY SOLID AXLES* / FRONT SWAY BAR DISCONNECT
SYSTEM* / LED HEADLAMPS AND FOG LAMPS* / TUNABLE MONOTUBE SHOCK
ABSORBERS / 9-SPEAKER ALPINE® PREMIUM SOUND SYSTEM* / SIRIUSXM®
TRAVEL LINK^{2*} / BLUETOOTH® STREAMING AUDIO* / UCONNECT® 6.5-INCH
TOUCHSCREEN* / REMOVABLE³ FOLD AND TUMBLE REAR BENCH SEAT /
FREEDOM TOP® 3-PIECE HARDTOP* / TRAILER TOW PACKAGE TOWS UP TO
3,500 LB*[†] / SIDE AIR BAGS^{4*} / WASH-OUT INTERIOR WITH DRAIN PLUGS /
MOST CAPABLE OPEN-AIR 4x4 VEHICLE ON THE MARKET^{5*}

*Available. †A note about this brochure: all disclaimers and disclosures can be found on the back cover. ‡When properly equipped.

BEST 4x4 OF THE DECADE'

FOUR WHEELER
MAGAZINE



Rubicon® Recon in Billet Silver Metallic

BORN TO WANDER



GO FORTH ... DISCOVER THE BIG, WIDE
WORLD AND START MAKING HISTORY.
WRANGLER IS A STORY-CREATING
FREEDOM MACHINE WITH SERIOUS
CAPABILITIES AND AN HONEST HEART.
AS UNIQUE AS YOU, IT'S HERE TO MAKE
EVERY DAY AN ADVENTUROUS TALE
WELL WORTH TELLING.

Rubicon® Unlimited in Black



**TRAIL RATED®
BEST-IN-CLASS®
OFF-ROAD PERFORMANCE**

Every Jeep® Brand vehicle bearing a Trail Rated® badge is designed and built to Go Anywhere, Do Anything® and perform with exceptional 4x4 capability. Each must successfully pass five performance test categories: Traction, Articulation, Maneuverability, Ground Clearance and Water Fording. Rest assured your Trail Rated Jeep Wrangler will work hard to navigate the difficult challenges Mother Nature sets before you.



AS YOUR WORLD
EXPANDS, SO DOES
YOUR WORLDLINESS. THIS
OPEN-AIR FREEDOM TAKES
YOU FAR AND WIDE.

1] COMFORTABLY CONTENT: When you're traveling in challenging weather conditions that can hamper your safety and comfort, several of Wrangler's features can make a big difference, like the available power heated exterior side mirrors designed to stay snow- and ice-free. Or the available heated front seats that take the chill away from your bottom line.

2] HIGH-TECH CONNECTIONS: While on the road or trail, you can keep informed and in touch with Uconnect.[®] Depending on the available system you choose, you'll have a range of hands-free[®] tools, entertainment and navigation at your service. A standard audio input jack lets you connect compatible devices and keep the fun going all along the way.

3] 9-SPEAKER ALPINE[®] PREMIUM SOUND SYSTEM: The optional nine-speaker Alpine[®] Premium Sound System creates a realistic concert stage by utilizing a high-powered eight-channel 552-watt amplifier, an eight-inch all-weather subwoofer, four tweeters and four 6.5-inch speakers — two located in the overhead sound bar.



WHEN IT COMES TO ENJOYING THE GREAT OUTDOORS,
WRANGLER LETS YOU KEEP YOUR OPTIONS OPEN.
CHOOSE YOUR TOP CONFIGURATION, THEN REMOVE³
THE DOORS, FOLD DOWN THE WINDSHIELD³ AND TAKE
AWAY THE BOUNDARIES BETWEEN YOU AND THE WORLD.

SUNRIDER® SOFT TOP: Let the sun shine in with this easy-to-use fold-back sunroof feature and its special three-ply fabric that's quiet and watertight. Standard. A premium Sunrider® Soft Top adds further durability and sound dampening, and includes an easy-to-wash dust blocker that helps keep your top in great shape. Available.

FREEDOM TOP® HARDTOP: Strong, secure and available in either Black or the exterior paint color of your Wrangler Sahara® or Rubicon®. A three-piece modular design lets you bring in the sun as you see fit: remove³ either front panel or both, or leave them in place and remove³ the main rear portion. Every Wrangler comes standard with a complimentary tool kit with four tools to help make door and roof removal³ a snap and a convenient padded storage bag comes standard on every hardtop Wrangler.

REMOVABLE³ DOORS: Full-framed doors with aluminum-forged hinges come standard on all models. Or opt for half-framed doors for the ultimate in open-air freedom.



Above: Sport in Baja Yellow (Late availability)
Left: Rubicon® Unlimited in Gobi

DETAILED DESIGNS: Finely wrought design details are purposely placed and carefully crafted. Sturdy bezels and knobs, robust stitching and a heritage-stamped grab handle are all proof that Wrangler is ready to endure years of heavy use.

FEAR NO MUD: Weather-resistant surfaces and a wash-out interior with drain plugs give you full permission to go out and have some fun in the mud.

INNER GLOW: Convenient interior courtesy lights illuminate the front footwells and cup holders, while an available electrochromatic rearview mirror automatically darkens to help eliminate the blinding glare of headlamps.



COMFORTABLY SEATED: Heated front seats are a must-have option when temps drop low. Durable interior seat fabrics and comfort-designed seats stand up to all kinds of sitting down. With plenty of cushion and support, you've got more stamina to keep going.

REAR CARGO MAT AND STORAGE BIN: A reversible cargo mat protects your carpet while a storage bin beneath the rear floor features a lift-out tray with convenient storage for bolts that are removed³ from your doors and/or hardtop.

STOW IT: You'll appreciate the mesh net storage in all doors and a locking glove compartment for keeping smaller items secure and within reach.



Properly secure all cargo

LOCKABLE CENTER CONSOLE: With open-air freedom, you need a safe place to store your goods. An inner tray helps keep things organized within the large bin.

REMOVABLE³ FOLD AND TUMBLE REAR BENCH SEAT: Standard on two-door models, this seat easily tumbles with spring assist to make more room for cargo. Unlimited models come with a standard split-folding rear seat.



TRU-LOK® LOCKING DIFFERENTIALS: Front and rear electronic-locking differentials balance speed between left and right wheels, maintaining forward momentum for the ultimate in traction. An instrument panel-mounted rocker switch can lock either the rear or both axles. (Standard only on Rubicon®)

DANA® 44 HEAVY-DUTY SOLID AXLES: Durability comes from heavy shafts, stiff housings, large pinion bearings and above-center pinion mountings for smoother, quieter operation. (Rear Dana® 44 standard on all models. Front Dana 44 standard only on Rubicon.)

HEAVY-DUTY SUSPENSION: Solid axles with locating arms, track/stabilizer bars, coil springs, front steering damper and tunable monotube shock absorbers are firm at low speeds and more relaxed at higher speeds. (Standard on Sahara®. A performance suspension is standard on Rubicon.)

FRONT SWAY BAR DISCONNECT SYSTEM: Flip a switch and the sway bar disengages when driving under 18 mph in 4WD-low (4LO) mode. This allows the front suspension to travel up to 25 percent farther on Rubicon than on Sport and Sahara models. (Standard only on Rubicon.)

ROCK RAILS: Extra-tough body-mounted rails provide additional rocker panel protection. (Standard only on Rubicon.)

TORQUE TO TOW: Wrangler can pull up to 2,000 lb of toys when equipped with the Trailer Tow Group, while Wrangler Unlimited can confidently tow up to 3,500 lb when properly equipped with the factory-installed Max Tow Package.

UNSTOPPABLE SPIRIT

3.6L PENTASTAR® V6 ENGINE WITH VARIABLE VALVE TIMING (VVT):

Its formidable power matches Wrangler's legendary brawn. Boasting 285 horsepower with 260 lb-ft of torque, this efficient roadmaster is cast from lightweight aluminum and sips regular-octane gas. Standard.

6-SPEED MANUAL TRANSMISSION:

Six speeds with a direct drive fifth gear and sixth gear overdrive are matched with a Command-Trac® 4x4 System on Sport and Sahara®, and with Rock-Trac® on Rubicon®. Standard.

5-SPEED AUTOMATIC TRANSMISSION WITH AUTOSTICK:

Gain exceptional efficiency and performance. An aggressive first-gear ratio offers ample launch power without compromise. Electronically controlled engine torque helps you move smoothly through every gear. The AutoStick feature offers driver-selectable control to manually change gears. Available.

COMMAND-TRAC® 4x4 SYSTEM:

For off-road and all-weather capability, this part-time, shift-on-the-fly system divides torque 50/50 between front and rear axles for tough traction. The NV241 GII transfer case shifts smoothly from 2WD to 4WD at speeds up to 55 mph. For serious rock-crawling, its 2.72:1 low range ensures confidence. Standard.

ROCK-TRAC® 4x4 SYSTEM: At the heart of the masterful Wrangler Rubicon beats one of the world's foremost four-wheel-drive systems. It delivers extreme rock-crawling ability, thanks to the 4:1 low-gear ratio. With the low crawl speed on Rock-Trac, it's easy to ascend or descend sharp hills and crawl over obstacles. Standard only on Rubicon.

Sport S Unlimited in Chief

Sahara Unlimited in Firecracker Red



CONNECT YOUR WORLD

HERE'S YOUR WINDOW INTO A
WIDER CIRCLE OF
CONNECTIVITY. UCONNECT®
OFFERS A WIDE RANGE OF
COMMUNICATION AND
ENTERTAINMENT
SERVICES, DELIVERING
THEM STRAIGHT INTO
YOUR WRANGLER.
DISCOVER THIS ROBUST
SYSTEM AND HOW YOU'D LIKE
TO CONNECT AT
DRIVEUCONNECT.COM

Uconnect®



NAVIGATION: Head out in the right direction with Uconnect® and its available, enhanced GPS wayfinding systems. The available Uconnect 430 NAV (RHB) system features the notable Garmin® GPS intuitive interface and navigation.



VOICE COMMAND: It simplifies driving by letting you keep your eyes on the road and your hands on the wheel. Use your voice to select AM/FM radio stations or SiriusXM® Satellite Radio² channels, make calls, select navigation destinations or show local fuel prices.



ENTERTAINMENT: Listen to your favorite playlist, then flip to news, comedy or the latest sports scores. Available SiriusXM® Satellite Radio² lets you tag, rewind and play favorite songs or artists. With SiriusXM² you get every channel available on your satellite radio, plus the freedom to listen anywhere when you stream SiriusXM² on your smartphone, tablet, computer or connected devices. It doesn't get any better than this. Your first year of service is included. Visit siriusxm.com for all of the details.



PHONE: Pair up to your Bluetooth®-enabled phone and voice commands⁸ allow you to easily "call Judy" or "redial" as you keep both hands on the wheel. This clever system is also smart enough to synchronize with your Bluetooth-compatible phone's contacts⁹ — up to 1,000 entries — every time you get into your vehicle.

SiriusXM²
SATELLITE RADIO

With the SiriusXM All-Access¹⁰ package, you get every channel available on your satellite radio, including commercial-free music, plus sports, news, talk and entertainment. You can also listen wherever you go on your portable devices with the SiriusXM App², which is included with your one-year trial subscription. Available.

SiriusXM
TRAVEL LINK²

Access useful information when you need it, right at your fingertips. Get detailed weather, maps, five-day forecasts and severe weather alerts, as well as sports scores and in-game weekly schedules for your favorite teams, information on fuel prices in your area and more. Your first five years of SiriusXM Travel Link² are included. Available.



TOUGH LOVE

THE HIGH-STRENGTH STEEL OF WRANGLER'S BODY WORKS FOR YOU 24/7, WHETHER YOU TRAVEL ON PAVED ROADS OR NO ROADS AT ALL. A FULL RANGE OF FEATURES ARE DESIGNED TO KEEP YOU AND YOUR PASSENGERS SAFE AND SECURE, ON EVERY ROAD. MOVE FORWARD WITH CONFIDENCE AND SAFELY SEE THE WORLD.

ENERGY-ABSORBING FRONT-RAIL EXTENSIONS: Collapsible hydroformed front-rail tips offer low-speed protection and can be serviced after impact events of up to 8 mph. Standard.

LED HEADLAMPS AND LED FOG LAMPS: Nighttime driving can bring hidden hazards. With these long-lasting, bright lamps, the road ahead is safely illuminated. Available.

ADVANCED MULTISTAGE FRONT AIR BAGS⁴: These standard front air bags⁴ provide nearly instantaneous occupant protection by matching air bag⁴ output to crash severity. Standard.

SUPPLEMENTAL FRONT SEAT-MOUNTED SIDE AIR BAGS⁴: Deploying from the outboard side of each front seat, these air bags⁴ enhance the protection of the driver and front-seat passenger in certain impacts. Each side air bag⁴ has its own sensor to trigger deployment of the air bag⁴ on the side where the impact occurs. Available.

SENTRY KEY[®] ENGINE IMMOBILIZER: A unique, embedded key code matched only to your vehicle helps keep your Wrangler safely where it belongs. Standard.

UCONNECT[®] VOICE COMMAND[®] WITH BLUETOOTH[®]: Multitasking is the way of today's busy world, even when you're on the road. Uconnect[®] Voice Command[®] with Bluetooth[®] allows drivers to take or make phone calls, while safely keeping both hands on the wheel. Available.

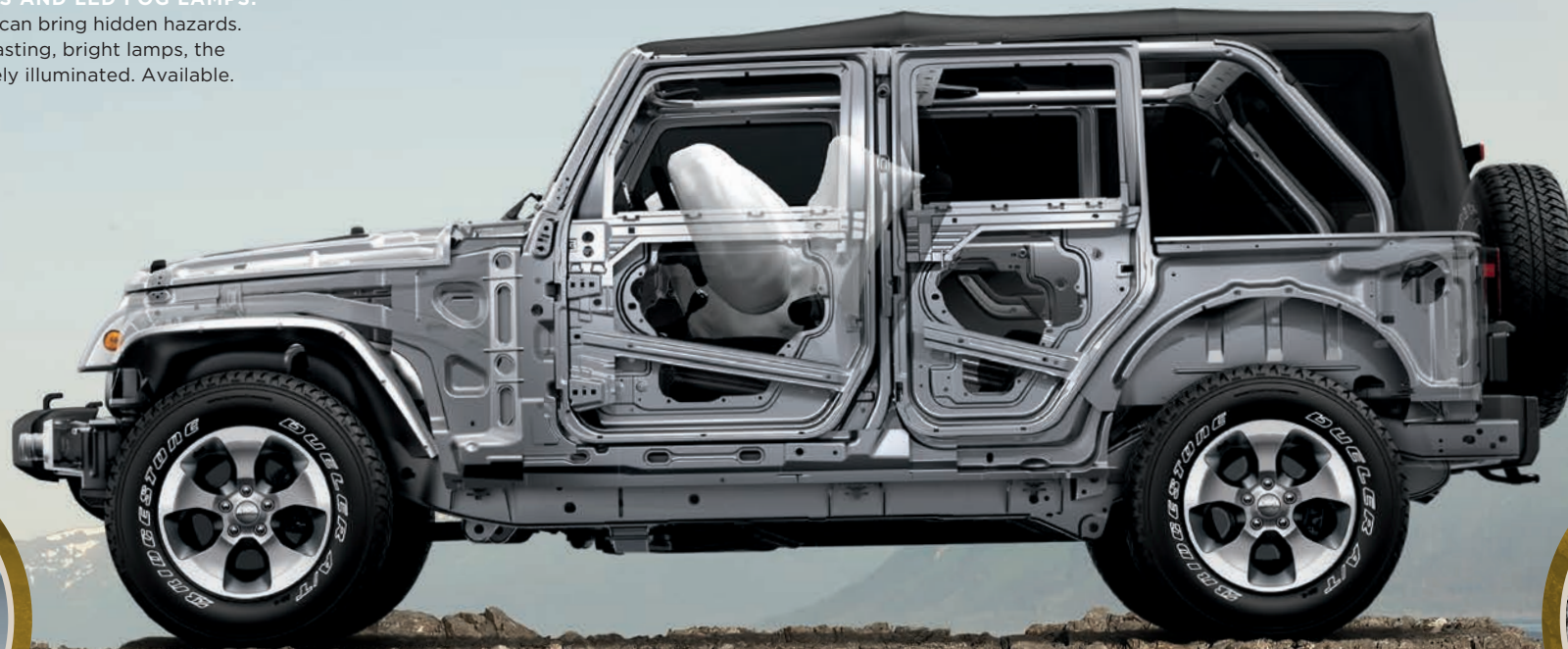
TRAILER SWAY CONTROL (TSC)¹¹: Crosswinds and traffic hold no sway over you and your valuable payload. As part of Electronic Stability Control (ESC)¹¹ TSC¹¹ helps keep you and the toys you tow safely on course. Standard.

HILL START ASSIST (HSA) AND HILL DESCENT CONTROL (HDC): Standard HSA works to prevent Wrangler from rolling when starting on an uphill gradient. It holds the vehicle stationary for two seconds after the driver's foot is removed from the brake pedal, allowing time to apply the throttle. The available HDC is packaged with the 5-speed automatic transmission and diligently works to help Wrangler navigate steep declines at a steady and consistent speed. Available.

HEATED POWER EXTERIOR MIRRORS: Melt snow and ice off sideview mirrors as you warm up your interior. The heat also helps to keep your mirrors icicle-free as you drive. Available.

ELECTRONIC STABILITY CONTROL (ESC)¹¹: Designed to assist drivers in maintaining control of their vehicle at all times, utilizing hydraulic brake assist, traction control, Electronic Roll Mitigation (ERM) and TSC¹¹ to constantly monitor driver input against the vehicle's actual course. If needed, ESC¹¹ automatically brakes and/or reduces engine torque, while ERM estimates the potential for wheel lift, reducing engine power and applying brakes if needed. TSC¹¹ detects sway unique to trailering and engages the brakes to slow the vehicle, increasing brake force to one side of the vehicle to help counteract the sway from the trailer. ESC¹¹ has three modes: Full-On, Partial-On (shuts off traction control) and Full-Off (ideal for off-road driving). Standard.

ENHANCED ACCIDENT RESPONSE SYSTEM (EARS): This system makes it easier for emergency personnel to see and reach occupants in the event of an accident, turning on interior lighting, flashing hazard lamps and unlocking power doors after air bag⁴ deployment. It also shuts off the flow of fuel to the engine. Standard.



RUBICON®

STANDARD

- 3.6L Pentastar® V6 engine with 6-speed manual transmission and 4.10 axle ratio
- Rock-Trac® 4x4 system
- Tru-Lok® front/rear locking differentials
- Front sway bar disconnect system
- Dana® 44 heavy-duty axles
- Performance suspension system with high-pressure monotube shocks and tunable valves
- Electronic Stability Control (ESC)¹¹
- Hill Start Assist (HSA) and Electronic Roll Mitigation (ERM)
- Advanced multistage driver and front-passenger air bags⁴
- Speed control
- Sentry Key® anti-theft engine immobilizer
- "Rubicon" embroidered seating
- Skid plates for fuel tank and transfer case
- Front and rear tow hooks
- Removable³ front air dam
- Rock rails
- Sunrider® Soft Top
- Full-framed removable³ doors
- Radio 130
- LED Lighting Group — LED fog lamps and automatic LED reflector headlamps
- 8-speaker sound system
- SiriusXM® Satellite Radio² includes 1-year trial subscription
- Full center console with locking storage
- Leather-wrapped steering wheel with speed and audio controls
- Power Convenience Group — Power door locks, auto-dimming rearview mirror with reading lamp, power heated mirrors, power windows, remote keyless entry and security alarm (4-door models only)
- 17-inch polished aluminum Mineral Gray wheels
- 32-inch BFGoodrich® Mud-Terrain tires
- Reversible cargo mat

- 115-volt outlet
- Air conditioning
- Fold and Tumble removable³ rear bench seat (2-door only)
- Wash-out interior with removable³ carpet and drain plugs
- Trailer Sway Control (TSC)¹¹

AVAILABLE

- 5-speed automatic transmission with 3.73 axle ratio
- Half doors, removable³ with plastic windows (requires soft top; N/A with power windows/doors)
- Body-color fender flares
- Deep-tint glass, rear and quarter
- Freedom Top® Black 3-piece modular hardtop with rear wiper/washer, rear defroster and Freedom Panel storage bag
- Body-color hardtop
- Premium Black Sunrider Soft Top (requires full-framed doors)
- Alpine® Premium Sound System with 9 speakers including an all-weather subwoofer
- Automatic temperature controls (requires Power Convenience Group, already standard on 4-door models)
- Power windows (standard on 4-door models; requires Power Convenience Group on 2-door models)
- Radio 430 NAV — Navigation, AM/FM radio, CD/DVD/MP3, audio input jack, USB port, 6.5-inch touchscreen, steering wheel-mounted music controls; also includes 5-year trial subscription to SiriusXM Travel Link²
- Remote Start System¹² with integrated key fob controls (requires Power Convenience Group and automatic transmission)
- Heated front seats (included with Cold Weather Group and leather trim or Mopar® Premium Sound and Leather Group; cloth trim must have Power Convenience Group)
- Slush mats
- Supplemental front seat-mounted side air bags⁴



17-inch Polished Aluminum Mineral Gray (standard)

DUAL TOP GROUP: Black or body-color 3-piece hardtop and premium Black Sunrider Soft Top

CONNECTIVITY GROUP: Electronic Vehicle Information Center (EVIC), Uconnect® Voice Command® and leather-wrapped steering wheel

POWER CONVENIENCE GROUP: Power door locks, auto-dimming rearview mirror, power heated mirrors, power windows with front 1-touch-down operation, remote keyless entry and security alarm (requires full-framed doors, standard on Rubicon® 4-door models)

TRAILER TOW GROUP: Class II hitch receiver and 4-pin adapter (2-door only)

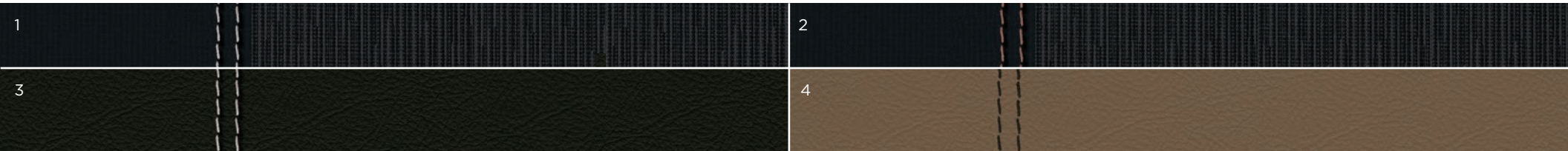
MAX TOW PACKAGE: Class II hitch receiver and 4-pin adapter (4-door only)

COLD WEATHER GROUP: Includes engine block heater, Remote Start System¹², Mopar Slush Mats and heated front seats; also includes Power Convenience Group on 2-door Rubicon

SMOKER'S GROUP: Removable ashtray and lighter element

MOPAR® PREMIUM SOUND AND LEATHER GROUP: Heated front seats and 9-speaker Alpine Premium Sound System with all-weather subwoofer

INTERIOR: **1)** Sedoso Cloth/Rivet Cloth — Black with Light Slate Gray accent stitching, Black upper and lower instrument panel (standard) **2)** Sedoso Cloth/Rivet Cloth — Black with Dark Saddle accent stitching, Black upper and Dark Saddle lower instrument panel (standard) **3)** McKinley Leather Trim — Black with Light Slate Gray accent stitching, Black upper and lower instrument panel (available) **4)** McKinley Leather Trim — Dark Saddle with Black accent stitching, Black upper and Dark Saddle lower instrument panel (available)



SAHARA®

STANDARD

- 3.6L Pentastar® V6 engine with 6-speed manual transmission and 3.21 axle ratio
- Command-Trac® 4x4 system
- Dana® 44 heavy-duty rear axle
- Dana 30 front axle
- Heavy-duty suspension with gas shocks
- Electronic Stability Control (ESC)¹¹
- Hill Start Assist (HSA) and Electronic Roll Mitigation (ERM)
- Advanced multistage driver and front-passenger air bags⁴
- Speed control
- Front and rear tow hooks
- Body-color fender flares
- Front/rear painted bumper accents
- Sentry Key® anti-theft engine immobilizer
- “Sahara” embroidered seating
- Skid plates for fuel tank and transfer case
- Removable³ front air dam
- Side steps
- Sunrider® Soft Top
- Full-framed removable³ doors
- Radio 130
- LED Lighting Group — LED fog lamps and automatic LED reflector headlamps
- 8-speaker sound system
- SiriusXM® Satellite Radio² includes 1-year trial subscription
- Fine Silver Metallic grille throats and headlamp rings
- Full center console with locking storage
- Leather-wrapped steering wheel with speed and audio controls
- Power Convenience Group — Power door locks, auto-dimming rearview mirror with reading lamp, power heated mirrors, power windows, remote keyless entry and security system
- 18-inch polished aluminum wheels with Granite Crystal painted pockets
- P255/70R18 Bridgestone® Dueler

All-Terrain on-/off-road tires

- Reversible cargo mat
- 115-volt outlet
- Air conditioning
- Fold and Tumble removable³ rear seat (2-door only)
- Wash-out interior with removable³ carpet and drain plugs
- Deep-tint glass, rear and quarter
- Trailer Sway Control (TSC)¹¹

AVAILABLE

- 5-speed automatic transmission
- Trac-Lok® limited-slip differential
- 3.73:1 axle ratio
- Freedom Top® Black 3-piece modular hardtop with rear wiper/washer, rear defroster and Freedom Panel storage bag
- Body-color hardtop
- Premium Black Sunrider Soft Top (requires full-framed doors)
- Slush mats
- Automatic temperature controls (requires Power Convenience Group)
- Remote Start System¹² with integrated key fob controls (requires automatic transmission)
- Radio 430 NAV — Navigation, AM/FM radio, CD/DVD/MP3, audio input jack, USB port, 6.5-inch touchscreen, steering wheel-mounted music controls; also includes 5-year trial subscription to SiriusXM Travel Link²
- Alpine® Premium Sound System with 9 speakers and an all-weather subwoofer
- Heated front seats (included with leather trim or Mopar® Premium Sound and Leather Group; cloth trim must have Power Convenience Group)
- Supplemental front seat-mounted side air bags⁴



18-inch Polished Aluminum with Granite Crystal painted pockets (standard)



18-inch Polished Aluminum (available)

DUAL TOP GROUP: Black or body-color 3-piece hardtop and premium Black Sunrider Soft Top

CONNECTIVITY GROUP: Electronic Vehicle Information Center (EVIC), Uconnect® Voice Command⁹ tire pressure monitoring display and leather-wrapped steering wheel

TRAILER TOW GROUP: Class II hitch receiver and 4-pin adapter

MAX TOW PACKAGE: Class II hitch receiver, 4-pin adapter and 3.73 axle ratio (4-door only)

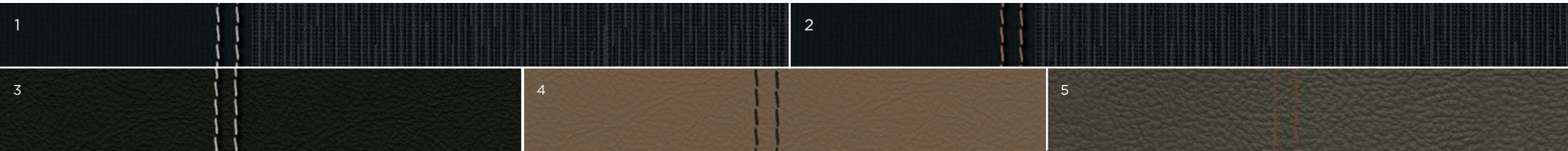
SMOKER'S GROUP: Removable ashtray and lighter element

MOPAR® PREMIUM SOUND AND LEATHER GROUP: Heated front seats and 9-speaker Alpine Premium Sound System with all-weather subwoofer

MOPAR CHROME EDITION GROUP: Chrome Tubular Side Steps, Chrome Exhaust Tip, Chrome Fuel Filler Door and Chrome Taillamp Guards (Authentic Jeep® Accessories by Mopar)

MOPAR PREMIUM CHROME GROUP: Chrome Exterior Mirror Caps and Chrome Grille (requires Mopar Chrome Edition Group; Authentic Jeep Accessories by Mopar)

INTERIOR: **1)** Sedoso Cloth/Rivet Cloth — Black with Light Slate Gray accent stitching, Black upper and lower instrument panel (standard) **2)** Sedoso Cloth/Rivet Cloth — Black with Dark Saddle accent stitching, Black upper and Dark Saddle lower instrument panel (standard) **3)** McKinley Leather Trim — Black with Light Slate Gray accent stitching, Black upper and lower instrument panel (available) **4)** McKinley Leather Trim — Dark Saddle with Black accent stitching, Black upper and Dark Saddle lower instrument panel (available) **5)** McKinley Leather Trim — Olive Green with Cattle Tan accent stitching, Black upper and lower instrument panel (available)



SPORT

STANDARD

- 3.6L Pentastar® V6 engine with 6-speed manual transmission and 3.21 axle ratio
- Command-Trac® 4x4 system
- Dana® 44 heavy-duty rear axle
- Dana 30 front axle
- Electronic Stability Control (ESC)¹¹
- Hill Start Assist (HSA) and Electronic Roll Mitigation (ERM)
- Advanced multistage driver and front-passenger air bags⁴
- Speed control
- Front and rear tow hooks
- Sentry Key® anti-theft engine immobilizer
- Skid plates for fuel tank and transfer case
- Leather-wrapped steering wheel with speed and audio controls (Sport “S”)
- Removable³ front air dam
- Halogen headlamps and fog lamps
- Sunrider® Soft Top
- Full-framed removable³ doors
- Radio 130
- 8-speaker sound system
- Cloth seating
- Full center console with locking storage
- 16-inch slot-spoke styled steel painted Argent wheels
- 17-inch 5-spoke Sparkle Silver painted aluminum wheels (Sport “S”)
- P255/75R17 Goodyear® Wrangler SR-A, OWL, on-/off-road tires (Sport “S”)
- P225/75R16 Goodyear Wrangler ST, BSW, on-/off-road tires
- Reversible cargo mat
- 12-volt outlet
- Air conditioning (Sport “S”)
- Fold and Tumble removable³ rear bench seat (2-door only)
- Wash-out interior with removable³ carpet and drain plugs

AVAILABLE

- 5-speed automatic transmission
- Trac-Lok® limited-slip differential
- 3.73:1 axle ratio
- Half doors, removable³ with plastic windows (requires soft top; N/A with power windows/doors)
- Side steps (Sport “S”)
- Deep-tint glass, rear and quarter (Sport “S”)
- Freedom Top® Black 3-piece modular hardtop with rear wiper/washer, rear defroster and Freedom Panel storage bag
- Premium Black Sunrider Soft Top (requires full-framed doors)
- Radio 430 — AM/FM radio, CD/DVD/MP3, audio input jack, USB port, 6.5-inch touchscreen and steering wheel-mounted music controls
- SiriusXM® Satellite Radio² includes 1-year trial subscription
- Alpine® Premium Sound System with 9 speakers including an all-weather subwoofer
- Slush mats
- Air conditioning (standard on Wrangler Unlimited)
- Heated front seats, included with Cold Weather Group and leather trim (packaged with Mopar® Premium Sound and Leather Group; cloth trim must have Power Convenience Group)
- Supplemental front seat-mounted side air bags⁴

LED LIGHTING GROUP: LED fog lamps and LED reflector headlamps

DUAL TOP GROUP: Black 3-piece hardtop and premium Black Sunrider Soft Top



16-inch Slot-spoke
Styled Steel Painted Argent
(standard)



16-inch Slot-spoke
Styled Steel Painted Black
(available)



17-inch 5-spoke
Aluminum Painted Sparkle Silver
(available)

CONNECTIVITY GROUP: Electronic Vehicle Information Center (EVIC), Uconnect® Voice Command⁸, tire pressure monitoring display and leather-wrapped steering wheel

POWER CONVENIENCE GROUP: Power door locks, auto-dimming rearview mirror, power heated mirrors, power windows with front 1-touch-down operation, remote keyless entry and security alarm (requires full-framed doors)

TRAILER TOW GROUP: Class II hitch receiver and 4-pin adapter (not available on RHD models)

MAX TOW PACKAGE: Class II hitch receiver, 4-pin adapter and 3.73 axle ratio (4-door only)

COLD WEATHER GROUP: Engine block heater, Remote Start System;¹² Mopar Slush Mats and heated front seats; also includes Power Convenience Group on 2-door model; includes heavy-duty suspension and LT265/70R17C BFGoodrich® KO2 Tires on Sport “S”

SMOKER'S GROUP: Removable ashtray and lighter element

MOPAR® PREMIUM SOUND AND LEATHER GROUP: 115-volt auxiliary power outlet, heated front seats and 9-speaker Alpine Premium Sound System with an all-weather subwoofer

MOPAR BLACK APPEARANCE GROUP: Black Side Steps, Black Fuel Filler Door and Black Taillamp Guards (Authentic Jeep® Accessories by Mopar)

MOPAR CHROME EDITION GROUP: Chrome Tubular Side Steps, Chrome Exhaust Tip, Chrome Fuel Filler Door and Chrome Taillamp Guards (Authentic Jeep Accessories by Mopar)

INTERIOR: Sedoso Cloth/Jeep Hex Cloth with Black accent stitching — Black with Black upper and lower instrument panel (standard)

SPECIAL EDITIONS

EVERY PASSION FOR JEEP.
WRANGLER DESERVES ITS OWN
PLAYGROUND. WITH THESE
UNIQUELY ACCESSORIZED
SPECIAL EDITION VEHICLES,
THOSE SEEKING AN “OUT-OF-
THE-BOX” COOL RIDE WILL
SURELY FIND A SOUL MATE.



RUBICON® RECON

Rubicon® content plus:

- 17" Granite Crystal Wheels
- 32" BFG Mud-Terrain T/A KM
- Off-Road Tires 255/75/R17
- Winch-Capable Steel Bumpers
- Premium Off-Road Rock Rails with Tread Plate
- Upgraded Dana® 44 Front Axle
- Cast Differential Covers
- Power Dome Hood
- 1/2" Suspension Lift
- Premium Black Soft Top
- Power Convenience Group / Connectivity Group
- Heated Leather-Trimmed Seats



GOLDEN EAGLE

Sport content plus:

- 17" Bronze Wheels
- Premium Off-Road Rock Rails with Tread Plate
- Winch-Capable Steel Bumpers
- Premium Tan Soft Top
- Body-Color Fender Flares
- Golden Eagle Hood Decals
- A/C and Connectivity Group
- Titanium Interior Accents
- Embroidered Cloth Seats



FREEDOM EDITION

Sport "S" content plus:

- 17" Granite Crystal Wheels
- Off-Road Steel Bumpers
- Premium Off-Road Rock Rails
- Cast Rear Differential Cover
- Body-Color Fender Flares
- Premium Black Soft Top
- 115V Auxiliary Power Outlet
- Leather / Cloth (insert) Seats



WILLYS WHEELER

Sport content plus:

- NEW Optional Tru-Lok® Rear Locker
- 17" Gloss Black Rubicon Wheels
- Off-Road Rock Rails
- 32" BFG Mud-Terrain T/A KM
- Off-Road Tires 255/75R17
- Connectivity Group with Hands-Free® Bluetooth®

WILLYS WHEELER W (Sport S+)

Willys Wheeler content plus:

- Air Conditioning
- Power Convenience Group (4DR std. / 2DR opt.)



ALTITUDE

Sahara® content plus:

- 18" Polished Black Wheels
- Gloss Black Exterior Accents
- Power Bulge Hood
- Body-Color Hardtop
- Heated Leather-Trimmed Seats
- Liquid Titanium Interior Accents

Firecracker Red

Chief

Xtreme Purple

Baja Yellow*

Bright White

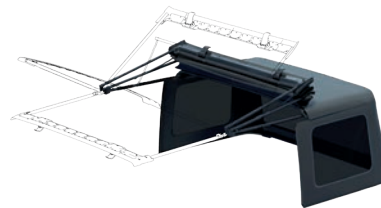
Gobi

Billet Silver Metallic

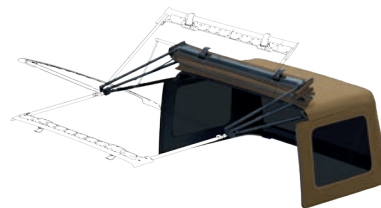
Granite Crystal Metallic

Rhino

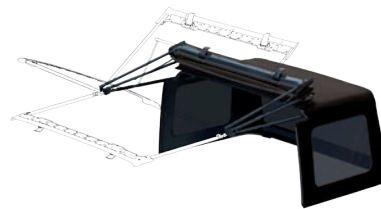
Black



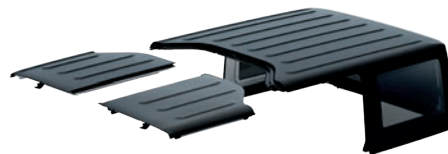
Black Sunrider® Soft Top
(standard)



NEW Tan Sunrider Soft Top
(standard on Golden Eagle,
available on Freedom Edition and
Rubicon® Recon)



Premium Black Sunrider Soft Top
(available)



Black Freedom Top® Hardtop
(available on all trims)



Body-Color Freedom Top Hardtop
(available on Sahara® and Rubicon)

*Late availability

SPECIFICATIONS

POWERTRAIN

Engine_____3.6L Pentastar® V6
Displacement (cu in)_____220
Horsepower (SAE @ rpm)_____285 @ 6,400
Torque (SAE net lb-ft @ rpm)_____260 @ 4,800
Axle Ratio (:1)_____
6-speed manual_____3.21 Std., 3.73 Opt.
(4.10 Std. — Rubicon)
5-speed automatic_____3.21 Std., 3.73 Opt.
(3.73 Std., 4.10 Opt. — Rubicon)
Fuel System _____Sequential, multipoint,
electronic fuel injection

TRANSMISSION

6-speed manual with overdrive,
synchronized in all gears, multi-rail shift
system with top-mounted shift lever_Std.
5-speed automatic with overdrive clutch
hydraulic actuation, Hill Descent Control,
electronically controlled converter clutch
(Std. on Right-Hand-Drive (RHD) models)_Opt.

4x4 TRANSFER CASE

NV241 GII Command-Trac® (includes
off-road skid plate), part-time, 2-speed,
with shift-on-the-fly, 2.72:1 low-gear
ratio_____Std. on all except Rubicon
NV241 OR Rock-Trac® (includes off-road
skid plate), part-time, 2-speed, with shift-
on-the-fly, 4.0:1 low-gear ratio_____Std. on
Rubicon

BODY / SUSPENSION / CHASSIS

(2-door / 4-door)
Body Design_____Boxed steel frame with
crushable, hydroformed front rail tips
Suspension_____Live solid axles,
5-link front / rear, coil springs,
leading arms, track / stabilizer
bars and front steering damper
Steering_____Power, recirculating ball
with damper
Turns (lock-to-lock)_____3.5
Turning Diameter (curb-to-curb) (ft)_____
_____34.6 / 40.8
Brake System_____4-wheel disc hydraulic,
power-assisted, 11.9" front and rear

EXTERIOR DIMENSIONS

(2-door / 4-door Rubicon; inches unless noted)
Wheelbase_____95.4 / 116
Overall Length (with spare tire) _____164.3 / 184.9
Overall Width_____73.7
Track (front / rear)_____61.9
Height_____72.5 / 72.6
Ground Clearance (at curb weight)_____10
Approach Angle (degrees)_____42.2
Breakover Angle (degrees)_____25.8 / 21.2
Departure Angle (degrees)_____32.3 / 32.5
Water Fording Depth⁷_____30

INTERIOR DIMENSIONS

(2-door / 4-door; inches unless noted)
Seating Capacity:
2-door (front / rear)_____2 / 2 adults
4-door (front / rear)_____2 / 3 adults
Head Room: front_____41.3
rear_____40.3 / 40.4
Leg Room: front_____41.0
rear_____35.6 / 37.2
Shoulder Room: front_____55.8
rear_____44.7 / 56.8
Hip Room: front_____55.6
rear_____44.7 / 56.7
Front-seat Travel_____9.4
Front-seat Volume Index (cu ft)_____54.6
Rear-seat Volume Index (cu ft)_____48.3 / 49.4
Cargo Volume (cu ft):
rear seat up_____12.8 / 31.5
rear seat folded_____56.5 / 70.6
Total Passenger plus
Cargo Volume (cu ft)_____120.05 / 150.4

CAPACITIES / WEIGHTS

(4x4) (2-door / 4-door; pounds unless noted)
Fuel Tank (gallons)_____18.6 / 22.5
Base Curb Weight_____3,760 / 4,075
Highest Payload Capacity
(with all occupants and cargo)_____1,000
Gross Vehicle Weight Rating (GVWR)
(when properly equipped)_____5,000 / 5,500

ELECTRICAL SYSTEM

Alternator_____160-ampere
Battery_____600-CCA, maintenance-free
Fan_____On-demand, pulse with
modulated electric

GEAR RATIO / CRAWL RATIO

Model	First Gear*	Transfer Case (4LO)	Axle	Crawl
Rubicon	4.46	4.00	4.10	73.1
Sahara	4.46	2.72	3.21	45.25
Sport	4.46	2.72	3.21	45.25

*Manual transmission

RAMP TRAVEL INDEX (RTI)

(20-degree ramp; sway bar connected / disconnected)
Rubicon_____638 / 822
Unlimited Rubicon_____484 / 644

TOWING DATA (pounds)

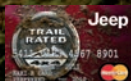
Towing Capacity:
2-door / 4-door
(with Trailer Tow Group, not available
for RHD) and 3.21 axle ratio_____2,000
2-door (with Trailer Tow Group and 3.73 axle
ratio; not available for RHD)_____2,000
4-door (with Max Tow Package)_____3,500
Tongue Load Limit_____350

5 YEAR / 60,000 MILE
POWERTRAIN LIMITED WARRANTY



**VEHICLE
PROTECTION**

**AUTOMOBILITY
PROGRAM**
CHRYSLER | JEEP | DODGE | RAM



WARRANTIES Jeep® Brand vehicles are covered by a 3-Year/36,000-Mile Basic Limited Warranty (excludes normal maintenance and wear items), as well as a 5-Year/60,000-Mile Powertrain Limited Warranty¹³ that is fully transferable. See your dealer for complete details and a copy of the 5-Year/60,000-Mile Powertrain Limited Warranty¹³.

MOPAR® VEHICLE PROTECTION Mopar Vehicle Protection[®] has a vested interest in your satisfaction and owner experience with your new Jeep® Brand vehicle. This is the only extended protection provider backed by the manufacturer, FCA US LLC. We stand behind every Mopar Vehicle Protection plan with certified, factory-trained technicians and the use of authentic Mopar parts. Your plan is honored at over 2,600 dealerships within the United States, Canada, Puerto Rico and Mexico. Be sure to ask for a Mopar Vehicle Protection plan at your dealership; call (800) 442-2666 or visit moparvehicleprotection.com

OFFICIAL JEEP® OWNER SITE & APP Your Jeep® Brand vehicle ownership gives you exclusive access to personalized vehicle information, service and maintenance records, recall notifications, roadside assistance, special offers and more through whatever device you prefer — desktop, tablet or smartphone. Register for your Jeep Vehicle Owner Site account at mopar.com/jeep or download the **Jeep Vehicle Info App** for free at either the App or Google Play stores.

AUTOMOBILITY PROGRAM The FCA US LLC Automobility Program provides aftermarket reimbursement incentives on adaptive vehicle upfit equipment to help provide safe and reliable vehicle modifications, enhancing accessibility for all people. For more information, call (800) 255-9877 or visit fcausautomobility.com

JEEP® MASTERCARD® Earn 3 points per \$1 on qualifying purchases made at FCA US LLC dealerships, 2 points per \$1 on qualifying travel purchases and 1 point per \$1 on qualifying purchases everywhere else with the new Jeep® MasterCard. Points may be redeemed at your local dealership for cash off your new or used vehicle, accessories, parts or service — including your next oil change. Or choose from hundreds of other rewards, including travel, cash back to your account, merchandise or gift cards!¹⁴ For more information or to apply, visit jeepcard.com

JEEP® WAVE Some call it preferential treatment. We call it Jeep® Wave — an exclusive owners' benefits program. With your enrolled Jeep Brand vehicle, enjoy complimentary maintenance with two free oil changes and tire rotations a year, trip-interruption coverage, same-day rental coverage, VIP treatment at Jeep Brand events across the country, discounts on Jeep Gear merchandise and 24/7 phone support. Enrollment is free on select vehicles or available for purchase. Visit jeep.com/wave for details.

THE JEEP® BRAND IS
PROUD TO OFFER SOME
OF THE BEST OWNERSHIP
SUPPORT PROGRAMS
AVAILABLE ANYWHERE.



OWNER
SUPPORT



Vehicle shown with Mopar® WARN® Winch, Winch Guard, Rubicon® X Front Bumper, Rubicon X Hood Kit, Rectangular LED Windshield-Mounted Off-Road Lights, LED Headlights, Jeep® Performance Parts Decal, Black Fuel Filler Door, Black Taillamp Guards, Beadlock Wheels and Rock Rails.

PUSH IT TO THE LIMIT WITH JEEP® PERFORMANCE PARTS

Hardcore off-roaders require hardcore parts. Jeep Performance Parts from Mopar® provide that toughness, durability and performance — enough to overcome any extreme challenges dished out by treacherous terrain. Jeep Performance Parts are developed with precise fit and function, properly equipping your Jeep Brand vehicle with the tools to tackle the toughest trails. Our lineup of products — including engine components, performance chassis parts, performance wheels, driveline components, performance engine components and off-road accessories — are engineered to enhance your Jeep Brand vehicle's unique characteristics. Your next adventure awaits, and Jeep Performance Parts from Mopar are ready to lead the way. Get going at mopar.com



DIFFERENTIAL COVER



OVERSIZED WHEEL MOUNT



SKID PLATE



BIG BRAKE KIT



4-INCH LIFT KIT



TAILGATE REINFORCEMENT ASSEMBLY



GO MOBILE Take a multimedia tour of your vehicle on your mobile device. Log on to the **jeep.com** mobile site for a comprehensive, at-a-glance review of what you need to know about your Jeep® Brand vehicle. Experience visual and interactive demonstrations of the entire lineup, gaining access to product information at your fingertips, wherever you go.



SOCIAL ADVENTURES Expand your horizons to include authentic and active Jeep® Brand online communities. Post stories, share photos, watch videos and get the latest news from Jeep Brand gearheads and engineers on Facebook, Instagram, Twitter, Pinterest, YouTube and Google+. Tune in and get out into the virtual world where thrilling adventures are happening every single day.

facebook.com/Jeep

instagram.com/Jeepofficial

twitter.com/Jeep

pinterest.com/Jeep

youtube.com/TheJeepChannel

plus.google.com/+Jeep

DELVE DEEPER INTO THE JEEP® BRAND WITH AN EXPANSIVE ARRAY OF SOCIAL MEDIA, SHOPPING AND OWNER RESOURCES. PLUS, DISCOVER ONE-OF-A-KIND EVENTS THAT CAN CREATE LIFELONG CONNECTIONS. EXPAND YOUR ADVENTURES IN EVERY DIRECTION BY VISITING **JEEP.COM**



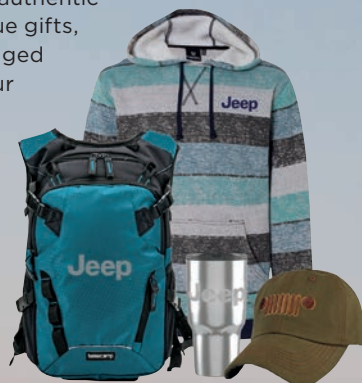
JEEP® BADGE OF HONOR

Experience an online community that invites

off-road fans to sign up, download the app and check in to legendary off-road trails across the U.S. — earmarked by the Jeep® Badge of Honor. Members can discover special trails and maps, earn Trail Points and ranks within the community, share photos and learn more about Jeep Trail Ratings. Connect with fellow Jeep vehicle owners and like-minded friends at **jeep.com/badge-of-honor**

JEEP® GEAR Uncover an extensive line of fun developed exclusively for Jeep® Brand enthusiasts. From authentic wearables to unique gifts, all items are as rugged and durable as your Jeep Brand vehicle. Express your true nature. Learn more at **jeep.com/gear**

Jeep Gear



JEEP® JAMBOREES For those with an adventurous spirit, join us on the trail. Head for parts unknown or return to fun, familiar places. Jeep® Jamboree U.S.A. offers off-road adventure weekends that bring together the outdoors, down-to-earth people and their Jeep Brand 4WD vehicles. Explore



America's backcountry at **jeepjamboreeusa.com**

JEEP® LIFE

Jeep®

(1) *Four Wheeler* Magazine (2) SiriusXM audio and data services each require a subscription sold separately or as a package by Sirius XM Radio Inc. Your SiriusXM service will automatically stop at the end of your trial unless you decide to subscribe. **If you decide to continue service after your trial, the subscription plan you choose will automatically renew thereafter and you will be charged according to your chosen payment method at then-current rates.** Fees and taxes apply. To cancel, you must call SiriusXM at 1-866-635-2349. See SiriusXM Customer Agreement for complete terms at www.siriusxm.com. All fees and programming subject to change. Not all vehicles or devices are capable of receiving all services offered by SiriusXM. Current information and features may not be available in all locations or on all receivers. (3) Be sure to follow all instructions in Owner's Manual for removal of top and doors, and lowering of windshield. Driving with doors off and windshield down is for off-road use only. (4) The Advanced Front Air Bags in this vehicle are certified to the new U.S. Federal regulations for Advanced Air Bags. Children 12 years old and younger should always ride buckled up in a rear seat. Infants in rear-facing child restraints should never ride in the front seat of a vehicle with a passenger front air bag. All occupants should always wear their lap and shoulder belts properly. (5) There simply are no other open-air 4WD vehicles with low-range ratio. (6) Based on Comparable Like Vehicles Toyota FJ Cruiser, Nissan Xterra Pro-4x. (7) Do not attempt water fording unless depth is known and consistent with the vehicle's water fording rating in the Owner's Manual. Traversing water can cause damage that may not be covered by the new vehicle warranty. Always off-road responsibly in approved areas. (8) Requires a mobile phone equipped with the Bluetooth Hands-Free Profile. Visit UconnectPhone.com for system and device compatibility. (9) Phone must support Bluetooth Phone Book Access Profile (PBAP). (10) SiriusXM audio and data services each require a subscription after the trial included with the new vehicle purchase, sold separately or as a package, by Sirius XM Radio Inc. **If you decide to continue service after your trial, the subscription plan you choose will automatically renew thereafter and you will be charged according to your chosen payment method at then-current rates.** Fees and taxes apply. To cancel, you must call SiriusXM at 1-866-635-2349. See SiriusXM Customer Agreement for complete terms at www.siriusxm.com. All fees and programming subject to change. (11) No system, no matter how sophisticated, can repeal the laws of physics or overcome careless driving actions. Performance is limited by available traction, which snow, ice and other conditions can affect. When the ESC warning lamp flashes, the driver needs to use less throttle and adapt speed and driving behavior to prevailing road conditions. Always drive carefully, consistent with conditions. Always wear your seat belt. (12) Remote Vehicle Start not available on all vehicles. You are responsible for using remote features in accordance with any laws, rules or ordinances in effect wherever you operate your vehicle. (13) Transferable. See dealer for a copy of the limited warranty. Includes towing to an authorized dealer. (14) Complete details, including restrictions, limitations and exclusions, will be available when you become a Cardmember. MasterCard is a registered trademark of MasterCard International Incorporated. This card is issued by First Bankcard, a division of First National Bank of Omaha, pursuant to a license by MasterCard International Incorporated.

©2017 FCA US LLC. All Rights Reserved. Chrysler, Dodge, Jeep, Ram, Mopar, SRT, Altitude, Automobility Program, Badge of Honor, Command-Trac, Freedom Top, Go Anywhere, Do Anything, Golden Eagle, the Jeep grille, Mopar Vehicle Protection, Pentastar, Rock-Trac, Rubicon, Sahara, Sentry Key, Trail Rated, Trac-Lok, Tru-Lok, Uconnect, Willys and Wrangler are registered trademarks of FCA US LLC.

Alpine and the Alpine logo are registered trademarks of Alpine Electronics, Inc. Dana is a registered trademark of Dana Corporation. BFGoodrich is a registered trademark of Goodrich Corporation. Bluetooth is a registered trademark of Bluetooth SIG, Inc. Bridgestone and any Bridgestone products or service names are trademarks or registered trademarks of Bridgestone Corporation. Facebook and logo are registered trademarks of Facebook, Inc. Garmin and the Garmin logo are registered trademarks of Garmin, Ltd. or its subsidiaries and are registered in one or more countries, including the U.S. Goodyear is a registered trademark of The Goodyear Tire & Rubber Company. All rights reserved. Google Play, Google+ and YouTube are registered trademarks of Google Inc. Instagram is a registered trademark of Instagram, Inc. iPhone and iTunes are registered trademarks of Apple Inc. Pinterest is a registered trademark of Pinterest, Inc. Sirius XM Connected Vehicles Services Inc. Sirius, XM, SiriusXM and SiriusXM Guardian and all related marks and logos are trademarks of Sirius XM Radio Inc. Sunrider is a registered trademark of Bestop, Inc. The Twitter logo is a service mark of Twitter, Inc. WARN is a registered trademark of Warn Industries, Inc. All other trademarks are the property of their respective owners.

This document is a publication of FCA US LLC. All product illustrations and specifications are based upon current competitive information at the time of publication approval. FCA US LLC reserves the right to make changes from time to time, without notice or obligation, in prices, specifications, colors and materials, and to change or discontinue models which are considered necessary to the purpose of product improvement or for reasons of design and/or marketing.